

## FEATURES

- Employer's W2 copies
- State/Local W2 copies
- W4 Employee Withholding Allowance Certificate yearly updates, as required by law
- I9 information sheets
- 1099 Miscellaneous, 1099 Dividend, and 1099 Interest
- 1096 summary
- SS4 and SS5 Request for Federal ID Number

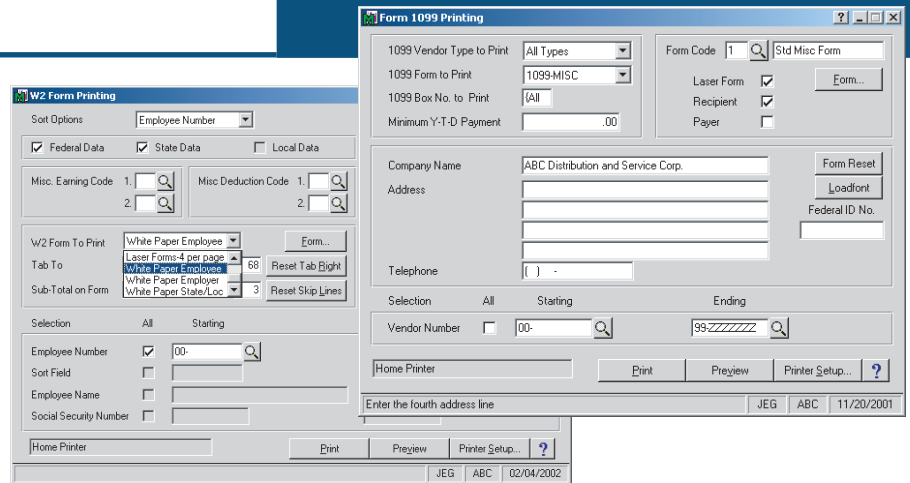
## REQUIREMENTS

### Software

- MAS 90 or MAS 200
- Integration with Payroll and/or Accounts Payable module(s)

### Hardware

- HP Compatible Laser Jet II or greater with 2 MB Ram
- Any currently supported MAS 90 or MAS 200 operating system

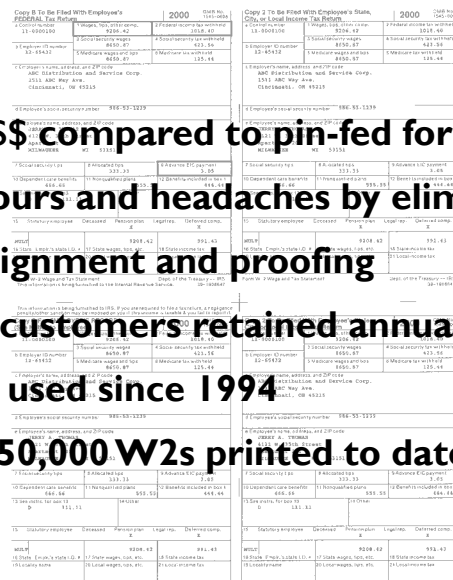


## Easiest and quickest way to print W-2's and 1099's

Using HP PCL language our White Paper W2/1099 Suite product prints approved government related forms with employee and vendor data on a blank sheet of paper. No more time wasted lining up pin-fed or pre-printed forms.

White Paper Suite is simply the best way imaginable to print year-end and informational returns that relate to employees and vendors.

- Save \$\$\$ compared to pin-fed forms
- Save hours and headaches by eliminating form alignment and proofing
- 95% of customers retained annually
- Widely used since 1994
- Over 150,000 W2s printed to date



<h2>ACH Complete</h2>	<p>Allows companies to collect on bills and pay invoices and employees electronically through the use of fully NACHA compliant files. The ACH Complete module can be integrated with any of the following modules: Accounts Receivable, Accounts Payable, Sales Order and Payroll.</p>
<h2>Sales Tax Management</h2>	<p>Simply the best way to maintain State and Local tax rates. Sales Tax Management automates the process of updating tax rates with the monthly changes made by thousands of taxing jurisdictions by providing a direct link to a nationally sold sales and use tax database.</p>
<h2>White Paper W2/1099 Suite</h2>	<p>Simply the best way imaginable to print year-end and informational returns that relate to employees and vendors. Using HP PCL language our White Paper W2/1099 Suite product prints approved government related forms on a blank sheet of paper.</p>
<h2>Country Club Enhancements to Accounts Receivable</h2>	<p>Provides functionality to handle the special needs of the Country Club Industry. Some of the features include: food and beverage minimums, automatic calculation of gratuities, excise tax and sales tax, and integration with MICROS and POS-Touch touch screen restaurant Point of Sale systems.</p>
<h2>Additional Pay Rates</h2>	<p>The Additional Payroll Pay Rates enhancement is fully integrated with the MAS 90 and MAS 200 Payroll module and allows the entry of five additional employee pay rates in Employee Maintenance. These additional pay rates mirror the functionality of the two standard rates available within the Payroll module.</p>
<h2>Quarterly Magnetic Media Wage Reporting</h2>	<p>A lot of states are now recommending or requiring unemployment wage reporting to be submitted in magnetic media format. These enhancements, which are stand-alone and do not require the Magnetic Media module, save time each quarter by creating these magnetic media compliant files directly from the payroll data files. Please contact Martin &amp; Associates to see if your state is available.</p>
<h2>W2 Magnetic Media Reporting</h2>	<p>A lot of taxing jurisdictions are now recommending or requiring W2 wage reporting to be submitted in magnetic media format. These enhancements, which are stand-alone and do not require the Magnetic Media module, save time at year-end by creating these magnetic media compliant files directly from the payroll data files. Please contact Martin &amp; Associates to see if your taxing jurisdiction is available.</p>
<h2>BankRec Clear</h2>	<p>Seamlessly integrated add-on to the standard Bank Reconciliation module, which greatly reduces the amount of time required to complete the reconciliation process. Through a mapping process, the layout of a bank ASCII file is defined and transactions can then be quickly cleared on the system. Exceptions and errors during the import are logged and reported on by the system.</p>
<h2>General Journal Entry Selective Update</h2>	<p>The General Journal Entry Selective Update enhancement allows users to selectively update transactions entered through General Journal Entry. A select window is displayed during General Journal printing and users can pick and choose the transactions to update.</p>
<h2>Transaction Journal Entry Selective Update</h2>	<p>The Transaction Journal Entry Selective Update enhancement allows users to selectively update transactions entered through Transaction Journal Entry. A select window is displayed during Transaction Journal printing and users can pick and choose the transactions to update.</p>
<h2>Inventory Transaction Entry Selective Update</h2>	<p>The Inventory Transaction Journal Entry Selective Update enhancement allows users to selectively update transactions entered through Inventory Management Transaction Entry. A select window is displayed during Transaction Journal printing and users can pick and choose the inventory transactions to update.</p>
<h2>Manual Check Entry Selective Update</h2>	<p>The Manual Check Entry Selective Update enhancement allows users to selectively update transactions entered through Accounts Payable Manual Check Entry. A select window is displayed during Manual Check Register printing and users can pick and choose the transactions to update.</p>