

### Reporting

- Business Insights Explorer provides you with a better way to access and understand your data offering you a powerful and intuitive business reporting tool
- The created views can be saved as a report



### Exporting

- Business Insights Explorer integrates with Microsoft Office through a simple right mouse-click
- Business Insights Explorer can exports your data to Excel, Word, Access and XML

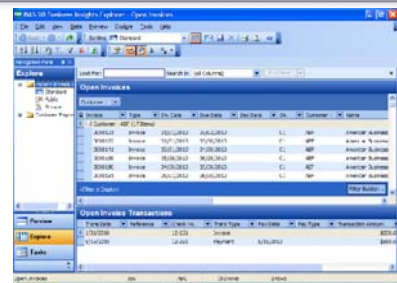


### Settings

- Changes made to the Data view, Navigation Pane, and Preview Pane can be saved as a new style
- Each Explorer task can have multiple settings with one being the default setting
- Even though settings are user specific, they can also be shared between users



### Demonstration



# Questions



---

---

---

---

---

---

---

---

---

---

---

---



## Business Insights Explorer

Business Insights Explorer is the most convenient way to navigate your business. It brings ad hoc inquiry, drill-down, drill-around analysis up to a whole new level. Turn your data into knowledge that you can act on by using powerful sorting, grouping, and filtering capabilities that you personalize to your specific needs and role within your company.

This easy-to-use inquiry and analysis application optimizes your daily decision-making tasks in the most critical areas of your business. A streamlined grid interface spans multiple data elements in one view, and you can choose between 11 views for the same company, including contacts, payments, invoices, and sales orders. Change views for the same customer, plus drill down to the transaction level and access customer maintenance for edits without having to go to other modules in your Sage MAS 90 or Sage MAS 200 ERP system. What's more, you can launch your familiar Sage MAS 90 and 200 tasks directly from within Business Insights Explorer and find the information you're looking for without losing your place. This 360-degree view gives you the ability to quickly access timely, up-to-the-minute business information. The result favorably impacts your bottom line and your long-term success through more accurate decision-making and enhanced customer satisfaction.

Business Insights Explorer provides you with a better way to access and understand your data—offering you a powerful, intuitive reporting tool—and you don't have to be a programmer to use it! First-time users can start right away. Even more important, Business Insights Explorer is great for analyzing “what-if” scenarios that can keep you awake at night. Who are the top customers for each of your salespeople? What products do they buy? How many new customers did you gain last month? And, because of the depth of functionality, Business Insights Explorer will continue to grow with you and your business far into the future.

### BUSINESS INSIGHTS EXPLORER MAKES SENSE OF THE NUMBERS

Get timely access to key business information in a format that is easy to read and understand

Easily apply query, reporting, and statistical analysis to make faster and better decisions for your future—this afternoon or next year

Quickly assess the state of your business, monitor a new product's acceptance rate, or the impact that a competitor's promo is having on your sales

Share information with others in your organization in a meaningful way

Use intuitive grid-based view of key entity and transaction-level data for more precise tracking and resolution

Easily drill around into original records and change views for at-your-fingertips access to invoices and transactions

Save views containing customized preferences and pre-defined filters for future use and navigation

Gain quick access to key system tasks for the displayed entity with powerful task launch options

Enable a wide range of sorting, grouping, and reorganizing functionality with easy-to-use customization and personalization features.

◀ *With just a few clicks, Business Insights Explorer delivers quick and easy data inquiries, answers to “what if” scenarios, and last-minute must-have executive requests.*

The screenshot shows the Sage MAS 90 Business Insights Explorer interface. The main window is titled "Customer" and displays a list of customers with columns for Name, Hold, Current Balance, 30 Days, 60 Days, 90 Days, and Aging. Below this, there is an "Open Invoices" section with columns for Invoice, Type, Inv Date, Due Date, Disc Date, Balance, Discount, Sales Tax, and Freight. The interface includes a navigation pane on the left, a search bar at the top, and a filter builder at the bottom.

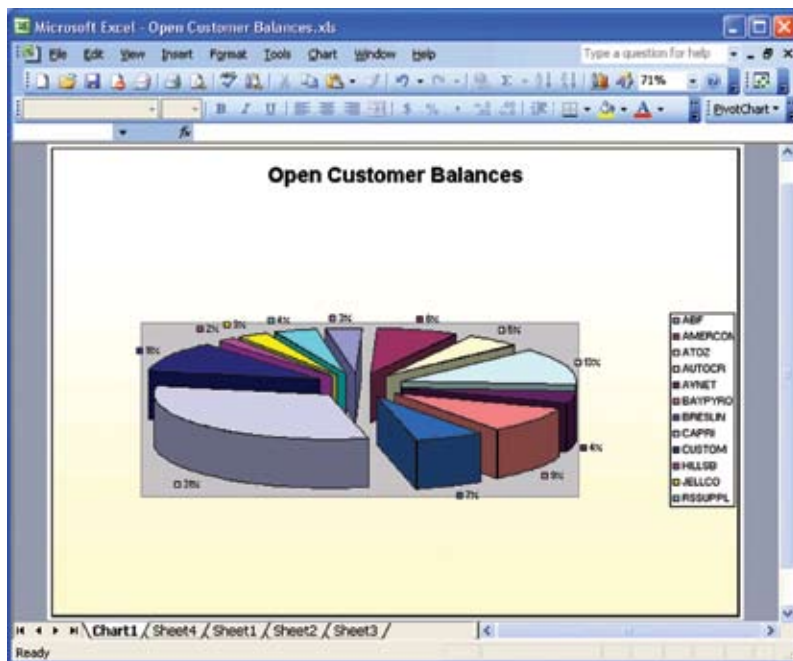
Customer	Name	Hold	Current Balance	30 Days	60 Days	90 Days	Aging 4
ABF	American Business Futures	No	\$11,888.20	\$0.00	\$0.00	\$168.20	\$5,783
ALLDAP	Alden's Appliance Repair	No	\$282.11	\$18.95	\$31.70	\$11.75	\$0
AMERCON	American Concrete Service	No	\$12,457.82	\$0.00	\$1,085.98	\$0.00	\$0
ATOZ	A To Z Carpet Supply	No	\$4,366.20	\$0.00	\$0.00	\$0.00	\$1,572
AUTOCR	Aircraft Accessories	No	\$6,533.78	\$0.00	\$0.00	\$6,406.53	\$4,607
AVNET	Avnet Processing Corp	No	\$87.09	\$0.00	\$0.00	\$606.00	\$6,771
BAYPRO	Bay Pyrotechnics Corp.	No	\$9,254.66	\$0.00	\$3,057.64	\$3,057.64	\$0
BRESLN	Bredin Parts Supply	No	\$7,399.12	\$0.00	\$0.00	\$0.00	\$0
CAPRI	Capri Sailing Ships	No	\$45,694.40	\$0.00	\$0.00	\$0.00	\$0
CUSTOM	Custom Craft Products	No	\$7,296.74	\$4,476.31	\$3,335.40	\$0.00	\$0

Invoice	Type	Inv Date	Due Date	Disc Date	Balance	Discount	Sales Tax	Freight
0000197	Invoice	05/31/2010	06/30/2010	06/10/2010	\$290.58	\$5.81	\$15.38	\$18.95
0000161	Invoice	05/08/2010	06/07/2010	05/18/2010	\$290.58	\$5.81	\$15.38	\$18.95
APR3090	Bal Pwd Ordr	04/30/2010	04/30/2010		\$0.95	\$0.00	\$0.00	\$0.00
MAR3190	Bal Pwd	03/31/2010	03/31/2010		\$18.95	\$0.00	\$0.00	\$0.00
FEB2890	Bal Pwd	02/28/2010	02/28/2010		\$31.70	\$0.00	\$0.00	\$0.00
JAN3190	Bal Pwd	01/31/2010	01/31/2010		\$12.75	\$0.00	\$0.00	\$0.00

## FEATURES

<b>Easy-to-Use Interface</b>	Business Insights Explorer provides a single, user-friendly interface that gives you quick access to crucial information, and related data—all the way down to the individual transaction.
<b>Quickly Preview Key Information</b>	View key information about a specific entity, such as a customer and related transaction information, including invoices and orders, in a single view using the Preview option. Apply filters to any view, displaying data according to your preference.
<b>Access Sage MAS 90 or 200 Tasks</b>	Use Task view to launch familiar Sage MAS 90 and 200 tasks from the Business Insights Explorer screen. When you're finished with that task, just close the Sage MAS 90 or 200 pop-up screen to return to where you were in Business Insights Explorer.
<b>A Single Point of Access for Related Data</b>	The Explore option allows you to perform extensive drill-down and drill-around investigations into related data records. You can easily click on another selection in the primary grid, and the secondary grid shows related data. Click on specific data to further drill into that entry. When changing views, context is passed as a filter from the original view to a new view.
<b>Efficient Search</b>	If you're looking for a particular entry, simply type a specific clue (such as "\$825.50") into the Look For field. Then, you can easily narrow the search by a selection in the Search field. This saves you time scrolling and scanning through lines of information.
<b>Convenient Access to Task Management Functions</b>	Task Management options provide an easy way for you to quickly access key tasks for the displayed view, including customer information update and order creation capabilities.
<b>Robust Customization and Personalization</b>	Convenient view filtering capabilities enable you to sort, group, reorganize, and rename columns within the grid, as well as save and share personalized views. You also can create custom fields based on simple or complex formulas.
<b>Microsoft Office Integration</b>	A simple right-click can export your data to pre-defined Word templates, plus Excel, Access, or XML files. Easily create mail-merge documents based on the filtered data being viewed.



◀ A simple right-click provides you with export capabilities to Microsoft Office that will, for example, transform your current data into an Excel pie chart for Open Customer Balances, or create a quick mail-merge template using the filter view. Business Insights Explorer also exports your data to Word, Access, and XML.

## ABOUT SAGE SOFTWARE

Sage Software supports the needs, challenges, and dreams of more than 2.7 million small and mid-sized business customers in North America through easy-to-use, scalable, and customizable software and services. Our products help manage a complete range of business functions including: accounting, operations, customer relationship management, human resources, time tracking, merchant services and the specialized needs of the construction, distribution, healthcare, manufacturing, nonprofit, and real estate industries.

**sage**  
software  
Your business in mind.