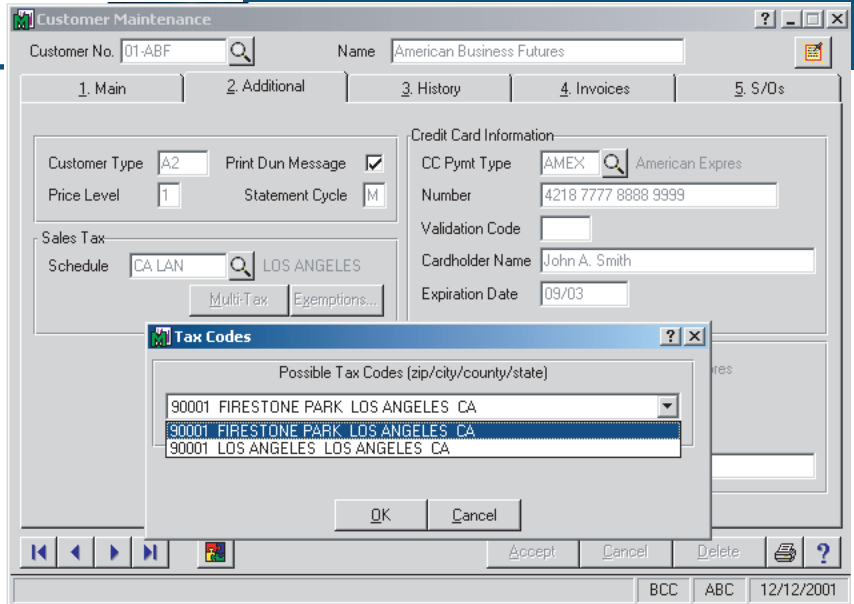


FEATURES

- Zip code searches of the Sales Tax File
- Correct sales tax code selections based on the customer zip code and ship-to addresses
- On-the-fly customer and ship-to address additions
- A list of possible tax codes are provided if more than one tax jurisdiction applies
- Utilities are provided that update your existing customers, ship-to addresses, open sales orders, and open purchase orders



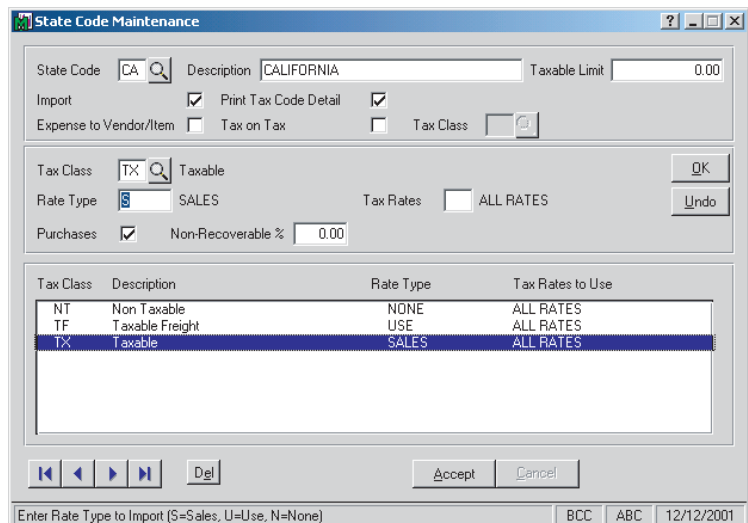
Sales Tax Management automates the process of updating MAS 90 or MAS 200 tax rates with the monthly changes made by thousands of taxing jurisdictions.

Simply, the best way to maintain State and Local tax rates - Sales Tax Management makes updating and choosing rates for your customers an automated process. Sales Tax Management provides a direct link to a nationally sold sales and use tax database.

Many state governments are becoming very aggressive in the collection of sales tax by performing frequent audits and assessing penalties in order to motivate companies to collect these taxes. Unlike other taxes, individuals who are responsible for a corporation's collection of sales and use tax may be held personally liable.

REQUIREMENTS

- Integration with Accounts Receivable, Sales Order, Accounts Payable, e-Business Manager, and/or Purchase Order modules
- MAS 90 or MAS 200
- CCH's Database
- Any currently supported MAS 90 or MAS 200 operating system



<h2>ACH Complete</h2>	<p>Allows companies to collect on bills and pay invoices and employees electronically through the use of fully NACHA compliant files. The ACH Complete module can be integrated with any of the following modules: Accounts Receivable, Accounts Payable, Sales Order and Payroll.</p>
<h2>Positive Pay</h2>	<p>The Positive Pay enhancement gives you the ability to automatically create an electronic file of all checks processed in Accounts Payable or the Payroll module. After sending this electronic file to your bank, they will only clear the checks that match records from the file.</p>
<h2>BankRec Clear</h2>	<p>Seamlessly integrated add-on to the standard Bank Reconciliation module, which greatly reduces the amount of time required to complete the reconciliation process. Through a mapping process, the layout of a bank ASCII file is defined and transactions can then be quickly cleared on the system. Exceptions and errors during the import are logged and reported on by the system.</p>
<h2>Sales Tax Management</h2>	<p>Simply the best way to maintain State and Local tax rates. Sales Tax Management automates the process of updating tax rates with the monthly changes made by thousands of taxing jurisdictions by providing a direct link to a nationally sold sales and use tax database.</p>
<h2>White Paper W2/1099 Suite</h2>	<p>Simply the best way imaginable to print year-end and informational returns that relate to employees and vendors. Using HP PCL language our White Paper W2/1099 Suite product prints approved government related forms on a blank sheet of paper.</p>
<h2>Additional Pay Rates</h2>	<p>The Additional Payroll Pay Rates enhancement is fully integrated with the MAS 90 and MAS 200 Payroll module and allows the entry of five additional employee pay rates in Employee Maintenance. These additional pay rates mirror the functionality of the two standard rates available within the Payroll module.</p>
<h2>Quarterly Magnetic Media Wage Reporting</h2>	<p>A lot of states are now recommending or requiring unemployment wage reporting to be submitted in magnetic media format. These enhancements, which are stand-alone and do not require the Magnetic Media module, save time each quarter by creating these magnetic media compliant files directly from the payroll data files. Please contact Martin & Associates to see if your state is available.</p>
<h2>W2 Magnetic Media Reporting</h2>	<p>A lot of taxing jurisdictions are now recommending or requiring W2 wage reporting to be submitted in magnetic media format. These enhancements, which are stand-alone and do not require the Magnetic Media module, save time at year-end by creating these magnetic media compliant files directly from the payroll data files. Please contact Martin & Associates to see if your taxing jurisdiction is available.</p>
<h2>Paperless Productivity Enhancements</h2>	<p>Allows for the ability to populate the "From E-mail Address" and "Paperless Office Output" options by user, by form. These setup options override the default options defined in the Paperless Office module.</p>
<h2>Customer Sales - Vendor Purchase Recalc Utility</h2>	<p>This utility is a tool that can be used by resellers to correctly display various sales and purchase history for data acquired prior to version 4.1 in Sage MAS 90 or 200. This tool recalculates data in Accounts Receivable and Accounts Payable to correctly reflect Sales and Purchase history.</p>